

COMANCHE GEAR



10340 REGENT CIRCLE ∞ NAPLES, FL 34109
PHONE & FAX 239/593-6944 ∞ CELL 239/404-7524

HOLE LOCATION FOR THE PROP GOVERNOR CONTROL 250 AND 260 ONLY

FOR THE LEFT SIDE 21139-XXX YOU WILL NEED TO DETERMINE THE LOCATION OF THE HOLE REQUIRED FOR THE CONTROL ROD PREFERABLY BEFORE YOU REMOVE THE OLD BAFFLE OR PROP GOVERNOR CONTROL ROD, BUT THIS METHOD WILL WORK EITHER WAY WITH SOME ADAPTATION. PLACE TWO PIECES OF MASKING TAPE AT THE APPROXIMATE HOLE LOCATION CROSS-WISE ON THE OLD BAFFLE, ONE ORIENTED ON THE LONGITUDINAL AXIS AND ONE ON THE LATERAL AXIS. MEASURE FROM THE CRANKCASE TO THE CENTERLINE OF THE CONTROL ROD AND MARK THAT LATERAL LOCATION ON THE TAPE AND DIMENSION IN A NOTE AND DRAWING FOR YOUR SANITY. LIKEWISE FOR THE LONGITUDINAL DIMENSION WHICH IS THE DISTANCE FROM A TANGENT AT THE CYLINDER FINS. USE A CARPENTER'S SQUARE OR OTHER NINETY-DEGREE FIXTURE AND CALL THE TANGENT A LINE 90 DEGREES TO THE CRANK CENTERLINE. MEASURE FROM HERE TO THE CENTERLINE OF THE CONTROL ROD AND MARK THAT LONGITUDINAL LOCATION ON THE TAPE AND DENOTE. ALSO YOU NEED YOU TO CONSIDER THE RANGE OF MOTION THE CONTROL ROD SCRIBES THROUGH ITS TRAVEL. NOTE THE LATERAL DIFFERENTIAL MAKING THIS A FACTOR IN THE HOLE'S LOCATION AND SIZE REQUIRED. I HOPE THIS ISN'T TOO CUMBERSOME BUT IT WILL GIVE YOU THE NEATEST JOB OF LOCATING THE HOLE.

INSTALLATION - PLEASE READ THIS

POSITION THE BAFFLES IN PLACE AS ACCURATELY AS POSSIBLE; YOU WILL HAVE SOME ADJUSTING TO DO SO DON'T PANIC YET. FOR THE LEFT SIDE BAFFLE IF YOURS HAS A SMALL BUMP-OUT THIS HAS BEEN LOCATED WHERE A CASE SCREW/BOLT HEAD MAY INTERFERE WITHOUT IT. THE COOLER CUTOUT IS THE LOCATION KEY FOR THIS LEFT BAFFLE. INSERT A SCREW WITH A LARGE O.D. WASHER THROUGH THE HOLE IN THE LEFT BAFFLE INTO THE #2 CYLINDER HEAD BUT DON'T TIGHTEN IT YET. YOU ARE CONSIDERING FOUR ISSUES. 1) - THE JOINING OF THE TWO BAFFLES AT THE "BRACKET" [SEE INCLUDED DRAWING]. 2) - THE FELT THICKNESS AT THE COOLER CUTOUT. ADJUST THE THICKNESS OF THE FELT BY PEELING TO IT MAKE THINNER IF REQUIRED. IF THE FELT IS TOO THICK IT MAY INDUCE STRESS [= CRACK, = BAD]. 3) - THE LEFT SIDE ATTACHMENT TO THE ADJOINING #2 CYLINDER **SIDE** BAFFLE. 4) - THE TENSION APPLIED FROM THE TIGHTENED TIE ROD BETWEEN THE FORE AND AFT BAFFLES. AT SOME CONVENIENT POINT YOU WILL WANT TO TRANSFER THE PREVIOUSLY-DETERMINED DIMENSIONS FOR THE LOCATION OF THE GOVERNOR ROD HOLE TO THE REPAIRED BAFFLE, MAKING SURE OF THE BAFFLE'S FITMENT BEFORE DOING SO.

FOR THE RIGHT SIDE BAFFLE NOTE THAT YOU WILL LIKEWISE NEED TO ADJUST TO FIT CONSIDERING FOUR ISSUES. 1) - THE JOINING OF THE TWO BAFFLES AT THE "BRACKET" [SEE INCLUDED DRAWING]. 2) - PROPER ALIGNMENTS TO AVOID CONTACT WITH THE ALTERNATOR/GENERATOR BELT TENSION BRACKET. 3) - THE RIGHT SIDE ATTACHMENT TO THE ADJOINING #1 CYLINDER **SIDE** BAFFLE. 4) - THE TENSION APPLIED FROM THE TIGHTENED TIE ROD BETWEEN THE FORE AND AFT BAFFLES. THE FLYWHEEL RING GEAR HAS BEEN ACCOUNTED FOR AND SHOULD NOT PRESENT A CLEARANCE PROBLEM; TAKE ANOTHER LOOK IF YOU HAVE THIS CONDITION AND REPOSITION.

FOR THE DETAIL OF THE "BRACKET" SEE THE INCLUDED PIPER ASSEMBLY DRAWING WHERE YOU MAY BE ABLE TO MAKE OUT WHAT HARDWARE SHOULD BE USED, NOTE IN THE DRAWING THE LEFT SIDE BAFFLE IS TOUCHING THE BRACKET. ALSO NOTE THE **SPACER** [EXTRA-THICK 5/16" LARGE O.D. WASHER] THAT **SHOULD BE USED** AND LOCATED BETWEEN THE "BRACKET" AND THE STARTER.

TO LOCATE THE HOLES AT THIS "BRACKET" USE A #6 HOLE DUPLICATOR TO DRILL THE HOLES THROUGH THE BAFFLES AT TWO SCREW LOCATIONS, THINK TWICE, DRILL ONCE; THINK AHEAD AND PAY CAREFUL ATTENTION TO DETAIL AND YOU WILL BE REWARDED WITH A GOOD-FITTING INSTALLATION.

COMANCHE GEAR



10340 REGENT CIRCLE ∞ NAPLES, FL 34109
 PHONE & FAX 239/593-6944 ∞ CELL 239/404-7524

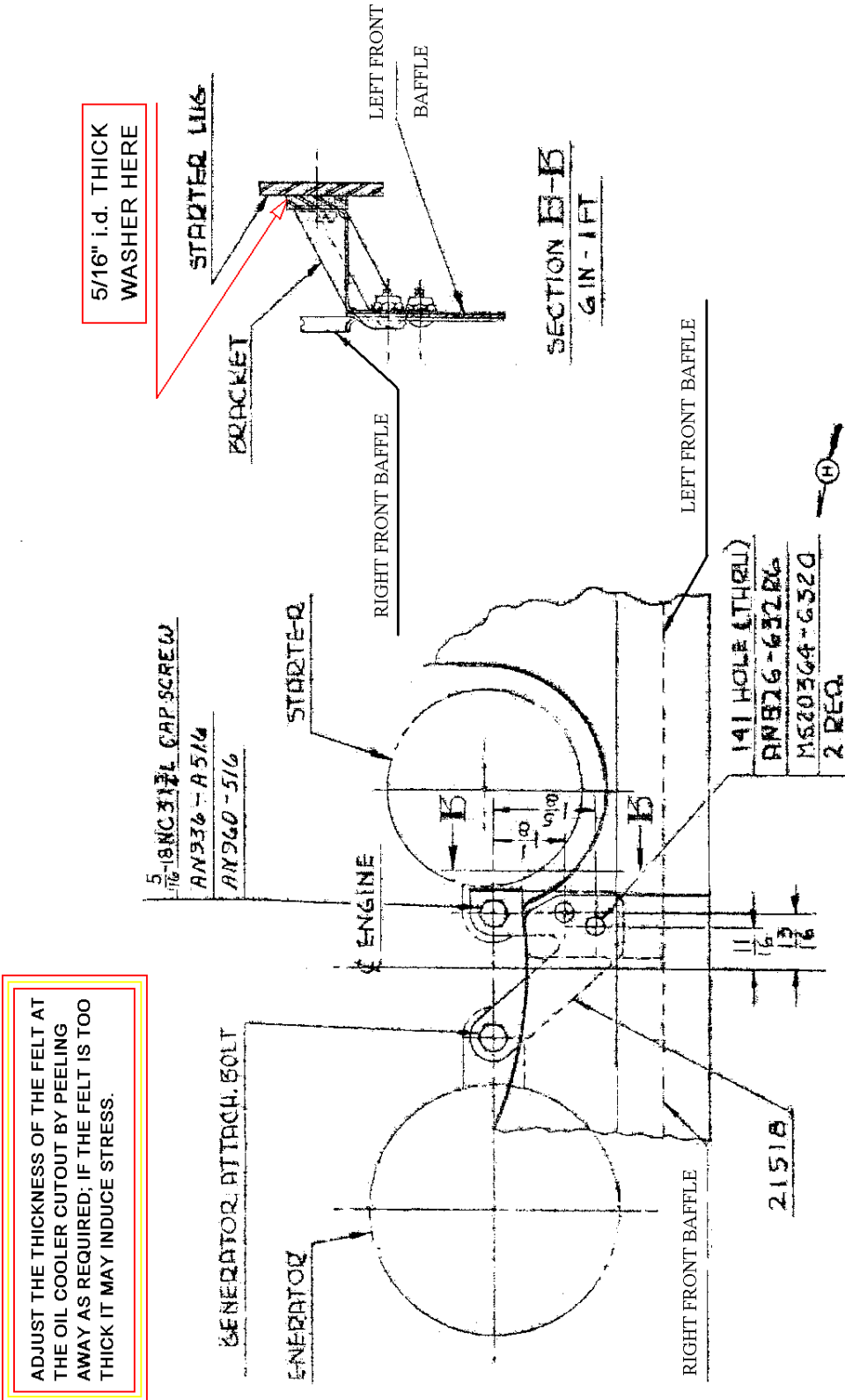


FIG. 1

ATTACH OF LEFT & RIGHT FRONT BAFFLES

NOT TO SCALE



10340 REGENT CIRCLE ∞ NAPLES, FL 34109
 PHONE & FAX 239/593-6944 ∞ CELL 239/404-7524

McMASTER-CARR

3288

Adhesive-Backed Silicone Foam Rubber Strips

A good choice when you need a material that performs well in all weather conditions. This closed-cell foam rubber resists high and low temperatures and is unaffected by sunlight and ozone. Color is orange-tan. Foam rubber has a temperature range of -100° to +500° F. **Textured Strips**—Top and bottom surfaces are skinned; sides are not. Adhesive is silicone with a temperature range of -100° to -500° F. **Smooth-Skinned Strips**—All four sides are skinned for easy cleaning and to prevent contamination. Adhesive is acrylic with a temperature range of 50° to 187° F.



Textured



Smooth

Firmness Rating	Textured	Textured	Smooth
	1/16"-3/16" Thick	1/4" Thick	1/16"-1/4" Thick
Tensile Strength, psi	7	90	8
Elongation %	65	200	120
Compression (2.5% Deflection), psi	150	6 to 14	250
Density, lbs./cu. ft.	32.8	29.38	32.8

Thick. Toler.	Lg. ft.	1/4" Wide		3/8" Wide		1/2" Wide		3/4" Wide		1" Wide		2" Wide	
		Each	Each	Each	Each	Each	Each	Each	Each	Each	Each	Each	
Textured Strips													
1/16" ±.024"	30	8645K15	\$11.54	8645K16	\$11.99	8645K17	\$12.44	8645K18	\$12.89	8645K19	\$13.34	8645K20	\$13.79
3/32" ±.024"	30	8645K25	18.79	8645K26	21.38	8645K27	23.97	8645K28	26.56	8645K29	29.15	8645K30	31.74
1/8" ±.032"	30	8645K35	20.57	8645K36	21.03	8645K37	21.49	8645K38	21.95	8645K39	22.41	8645K40	22.87
3/16" ±.032"	15	8645K45	13.50	8645K46	17.40	8645K47	19.93	8645K48	22.46	8645K49	24.99	8645K50	27.52
1/4" ±.046", -0.032"	3	8645K55	4.03	8645K56	4.49	8645K57	4.95	8645K58	5.41	8645K59	5.87	8645K60	6.33
Smooth-Skinned Strips													
1/16" ±.024"	15	5109K11	6.88	5109K12	7.16	5109K13	7.44	5109K14	7.72	5109K15	8.00	5109K16	8.28
3/32" ±.024"	15	5109K21	9.92	5109K22	9.72	5109K23	9.52	5109K24	9.32	5109K25	9.12	5109K26	8.92
1/8" ±.032"	15	5109K31	10.52	5109K32	11.11	5109K33	11.70	5109K34	12.29	5109K35	12.88	5109K36	13.47
3/16" ±.032"	15	5109K41	13.82	5109K42	17.82	5109K43	20.42	5109K44	23.02	5109K45	25.62	5109K46	28.22
1/4" ±.035"	3	5109K51	4.03	5109K52	4.50	5109K53	4.97	5109K54	5.44	5109K55	5.91	5109K56	6.38

COMANCHE GEAR



10340 REGENT CIRCLE ∞ NAPLES, FL 34109
PHONE & FAX 239/593-6944 ∞ CELL 239/404-7524

RIGHT SIDE BAFFLE WITH INTERAV ALTERNATOR KIT

IN ORDER TO AVOID TRIMMING THE RIGHT SIDE 21138-XX BAFFLE YOU WILL HAVE TO CONFIGURE THE MOUNTING BRACKETS AS PICTURED. THE OBJECT IS TO KEEP THE BELT TENSION BRACKET WITH THE SLOT FOR BELT TENSION ADJUSTMENT AS LOW AS POSSIBLE SO AS TO AVOID CONTACT WITH THE BAFFLE. THE MORE THIS BRACKET APPROACHES THE HORIZONTAL THE CLOSER IT IS TO THE BAFFLE, NOT GOOD.

